

POPARZENI KAWĄ TRZY

TECHNICAL RIDER **FESTIVALS** 2020

This document is an integral part of the contract between the organizer and the manager of POPARZENI KAWA TRZY band. Being ignorant of the rider does not excuse the organizer from abiding by it. Any breach of the terms and conditions of this rider is a breach of the contract. Possible changes should be consulted directly with the band's sound engineer.

PA systems

We accept exclusively Line Array loudspeaker sets of the highest series.

Preferred sound systems: d&b audiotechnik (seria J,Q) ADAMSON Y 18, L'ACOUSTICS (K1, V-DOSC, KUDO), MEYER SOUND (MILO, MICA), NEXO (GEO D,T), ELECTRO-VOICE(XLC), JBL VERTEC (VT4889)

Mid-high frequency systems should be suspended. The suspension elements must have proper certification.

FOH MIXING CONSOLE

1. At outdoor concerts the console should be located within 30-35 m centrally on the stage's axis, on a platform not higher than 30-50 cm.
2. In venues the console should be located on the stage's axis. Locating the console on the side of the hall, under balconies or in alcoves is unacceptable.
3. Preferred soundboards: SoundCraft Vi6/4, Vi 3000 SoundCraft Si Performer/Expression (30 faders) Digidesign(Profile, D-Show) Digico SD8 i SD9, Yamaha (CL, M7CL).

We require the possibility to insert two stereo signal processors into mixer's physical groups.

MONITOR SYSTEMS

We work only on digital consoles (with GAIN memory)

Preferred consoles:

- Digico SD8 i SD9
- SoundCraft Vi6/4, Vi 3000
- Yamaha M7CL, PM5D-RH, LS 9
- Digidesign (Profile, D-Show)

The monitor console should be located in a manner allowing the sound engineer an eye contact with every member of the band. The possibility of quick moving between the stage and the monitor position without risking engineer's health or life is essential. There has to be enough space directly next to the console to place the wireless system (rack 4-U).

There must also be ROUTER next to monitor console.

THE BAND REQUIRES THE FOLLOWING MINIMUM OUTPUT LIST:

1. ŁYSY (guitar, choir): personal in-ear monitors, (separate AUX)
2. ROMEK (voc) : personal in-ear monitors (separate AUX)
3. JACEK (trombone) : personal in-ear monitors (separate AUX)
4. MARIO (bass) : personal in-ear monitors (separate AUX),
5. WOJTEK: (drums) : personal in-ear monitors, (separate AUX),
6. ROMEK (voc) : personal in-ear monitors (separate AUX),
7. PIOTR (trumpet, choir) : personal in-ear monitors (separate AUX),
8. MARIAN (alt, tenor sax, choir) : personal in-ear monitors (separate AUX).

The band does not require a sidefill.

IMPORTANT !

- We require the sound engineers' positions to be separated from the audience with guard rails.
- The sound engineers of the band Poparzeni Kawa Trzy do not produce support bands.
- The ORGANIZER has material liability for any damage done to the equipment brought by the sound engineers of the band.
- We require two stagehand persons helping to unload and load the equipment.
Unauthorized people are forbidden to enter the stage both during soundcheck and concert.
- We require two fire extinguishers on stage during concert.
- There must be TalkBack provided between the stage and FOH soundboard.
- We require the presence of an experienced crew responsible for the sound system during soundcheck and concert.
- We require the platform for drums of minimum height of 50 cm.

INPUT LIST:

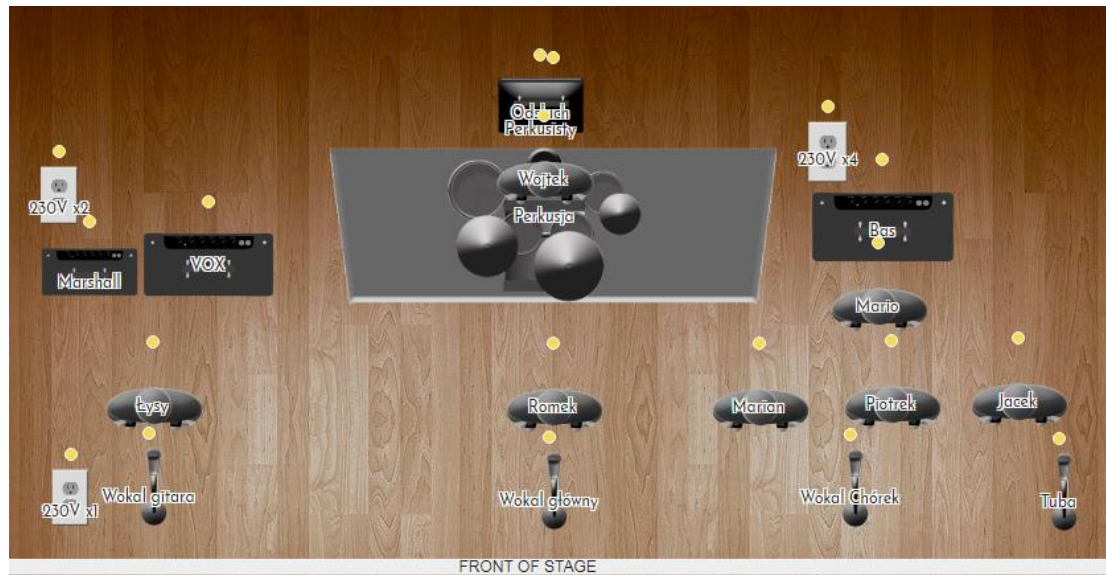
1. **Kick** (quality mic for kick drum, we prefer AKG D112, Shure Beta 52),
2. **Kick In** (Shure 91),
3. **Snr top** (SM 57, Sennheiser 521 BlackFire or 541 BlackFire),
4. **Snr bot** (Beta 181, AKG C414, in the last resort SM 57),
5. **Hi Hat** (quality mic for hi hat, we prefer AKG),
6. **Tom rack Hi** (quality mic, we prefer Shure Beta98AMP or Sennheiser e904),
7. **Tom rack Mid** (quality mic, we prefer Shure Beta98AMP or Sennheiser e904),
8. **Tom Floor** (quality mic, we prefer Shure Beta98AMP or Sennheiser e904),
9. **Overhead.L** (AKG C414, Shure KSM137, Beta 181),
10. **Overhead.R** (AKG C414, Shure KSM137, Beta 181),
11. **Bass** (XLR),
12. **Git** (SM 57),
13. **Git** (Sennheiser e906),
14. **Voc ŁYSY** (Beta 58, AKG D7)
15. **Voc Romek** (Beta 58, AKG D7),
16. **Voc Choir** (Beta 58, AKG D7),
17. **Sax Alt** (personal AKG wireless system),
18. **Sax Tenor** (personal AKG wireless system),
19. **Trumpet** (personal AKG wireless system),
20. **Tuba** (SM 57, Sennheiser 521).

FOH and Monitor consoles should be configured specifically according the above list. All mentioned inputs should be within one layer of the soundboard. We allow subtle changes after previous consultation with PK3 sound engineers.

CONTACT :

- **FOH: Andrzej Karp +48602311637**
- **Monitor: Jarosław Denis +48601246080, Maciej Barański +48510059578**

STAGE PLAN



LIGHTING

FRONT:

- 5 x PC 1 Kv (or 5 x DTS Nick NRG 1201)
- 4 x Blinder (preferably 8-Lite Molefay)

BACK UP :

- 4 x Mac 700 Profile
- 4 x DTS Nick NRG 1201 (or other LED wash with ZOOM option)
- 3 x Robe Pointe
- 1 x ACL circuit
- 2 x Martin Atomic 3000

BACK BOTTOM :

- 4 x Mac 700 Profile
- 4 x DTS Nick NRG 1201 (Robin mode 3)
- 3 x Robe Pointe
- 1 x ACL circuit (can be changed to : Sunstrip , Halupix panel or similar)

CONSOLE : GRAND MA 2

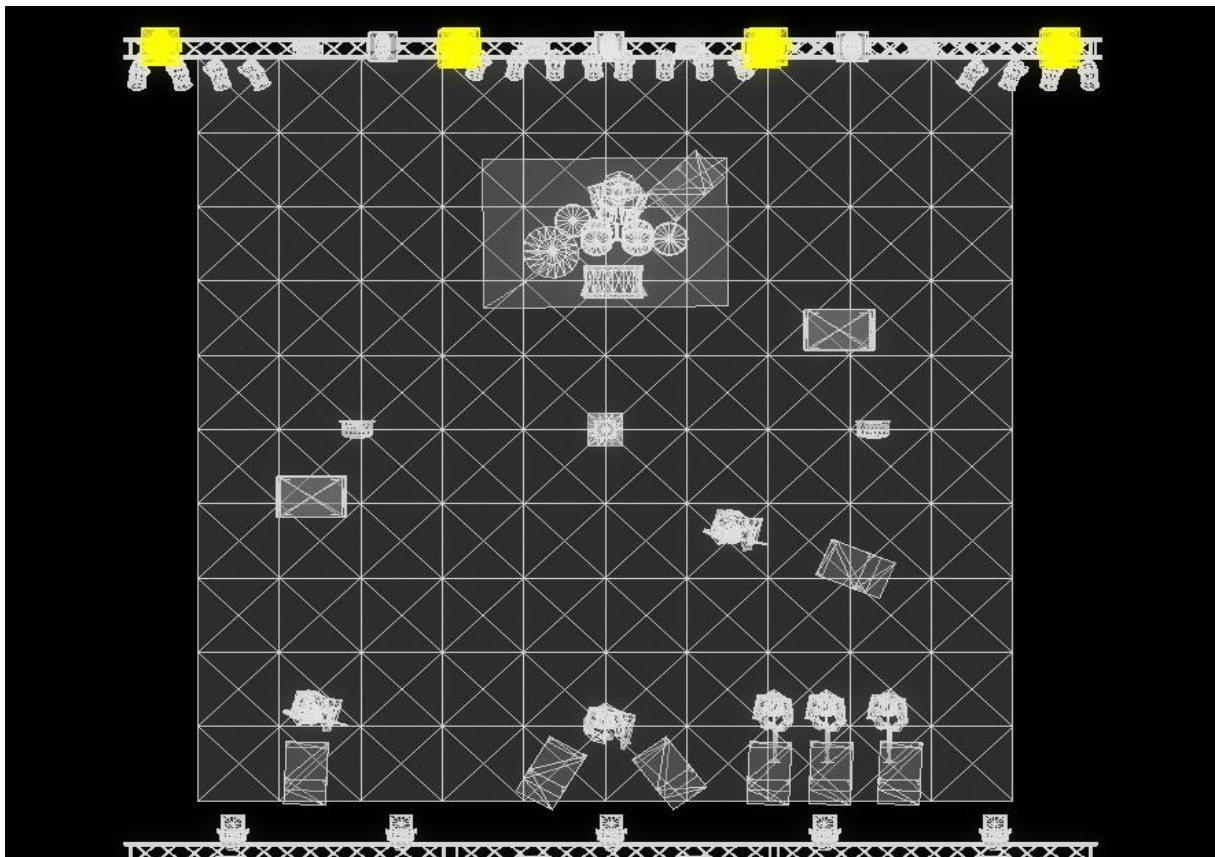
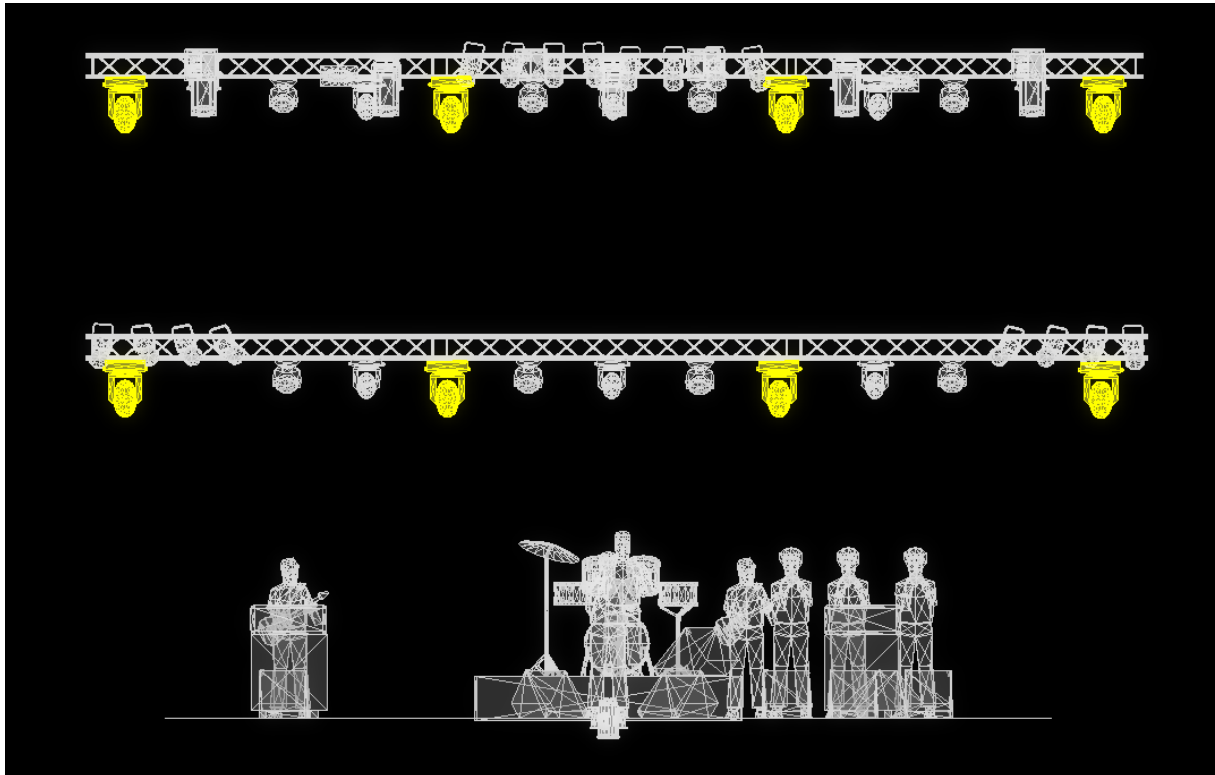
SMOKE : 2 x Hazer plus fans

*Please contact me minimum **7 days before the show.***

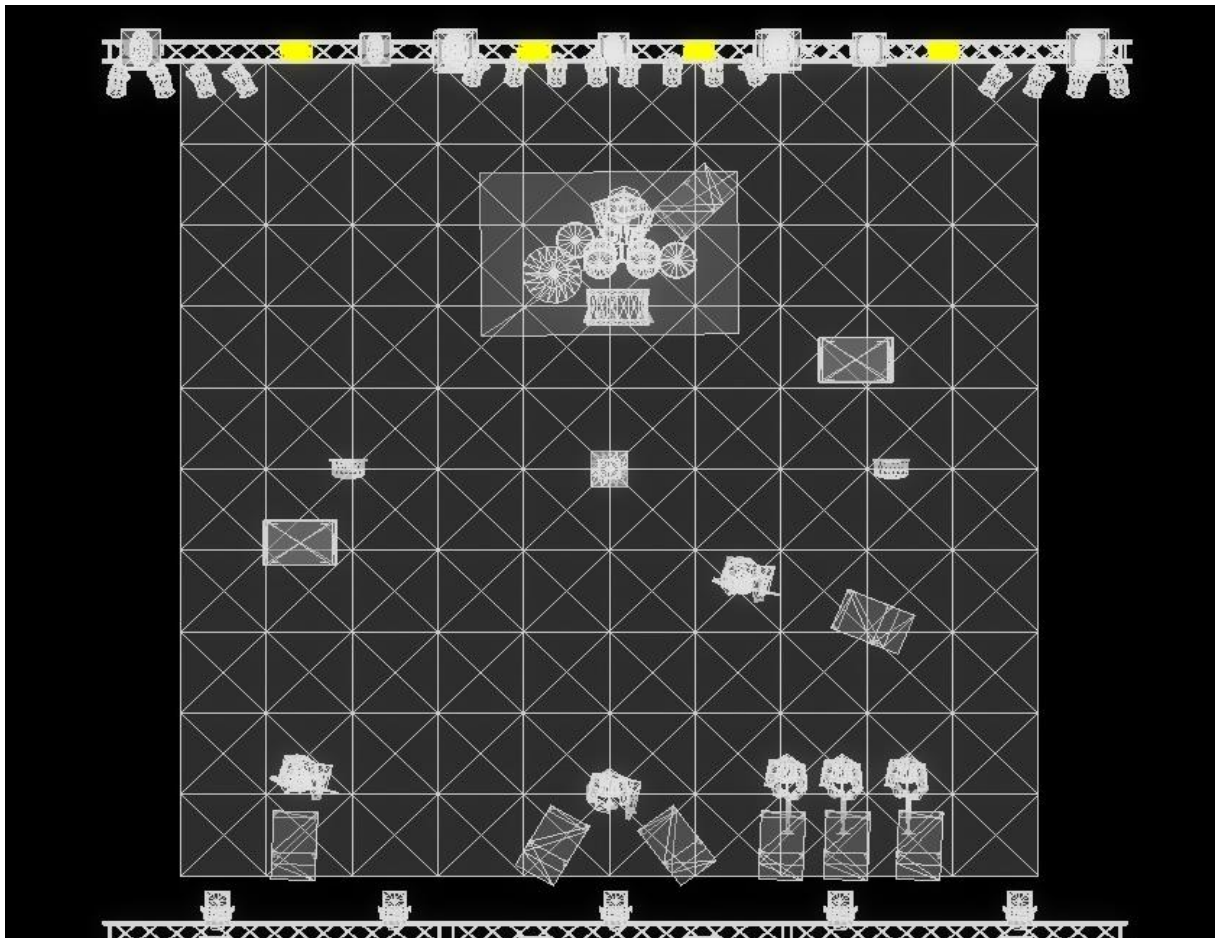
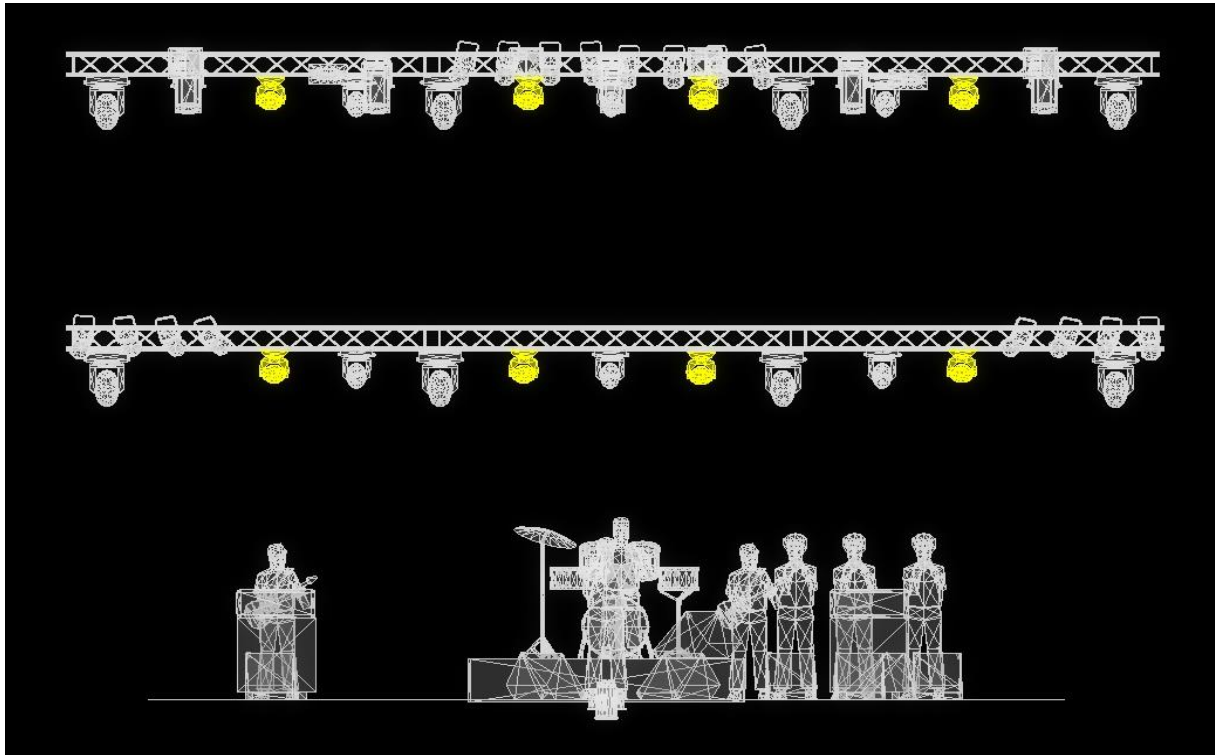
CONTACT: KAMIL BORZESKI 507944664 e-mail: kamil.dejot@windowslive.com



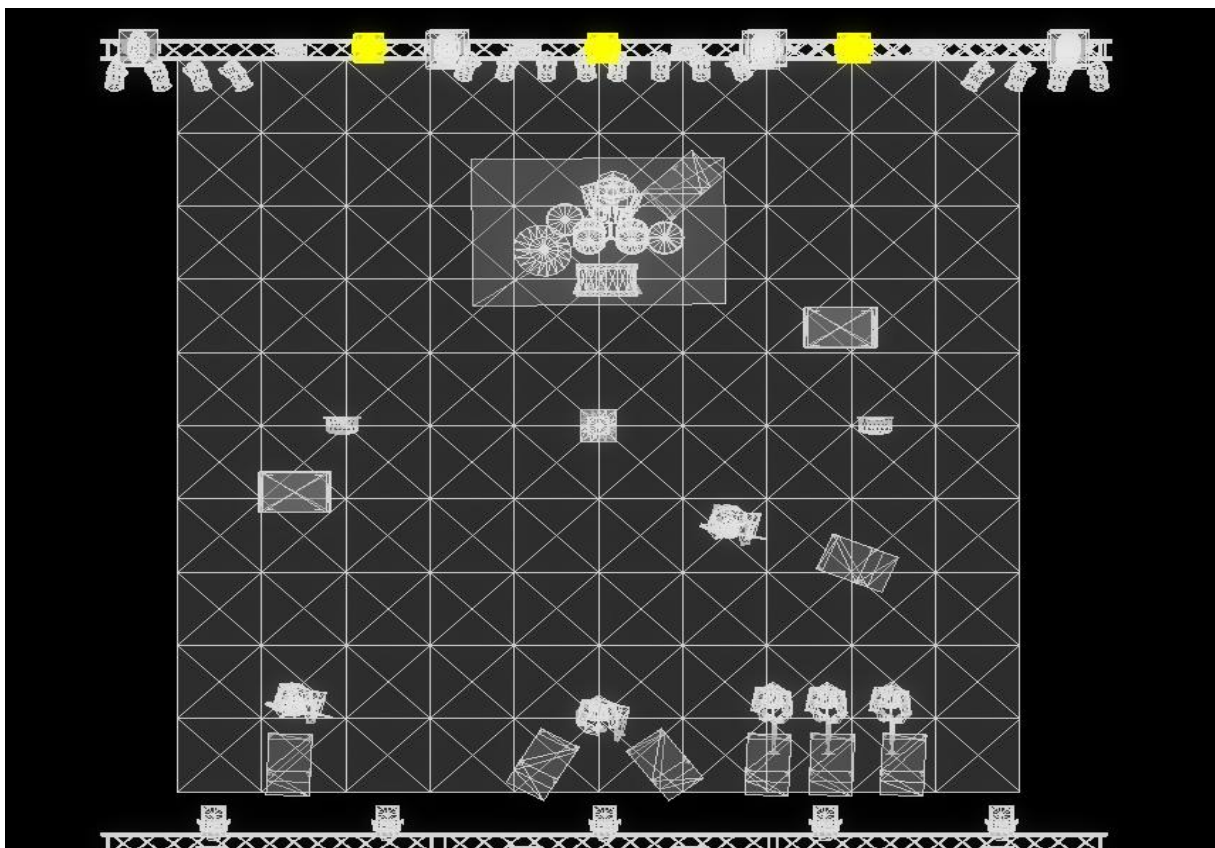
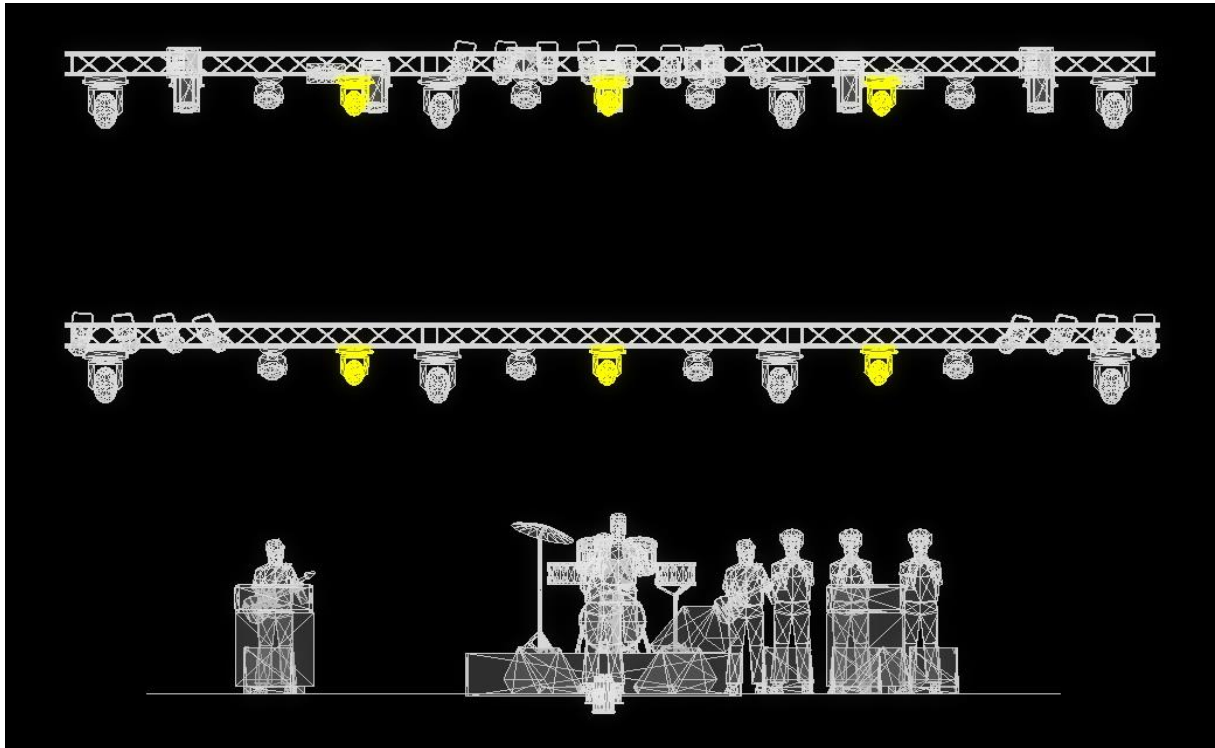
MAC 700 PROFILE



DTS NRG NICK 1201



ROBE POINTE



ACL

